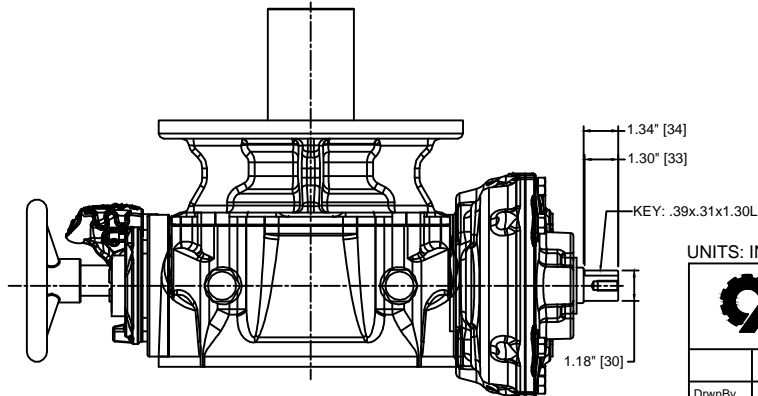
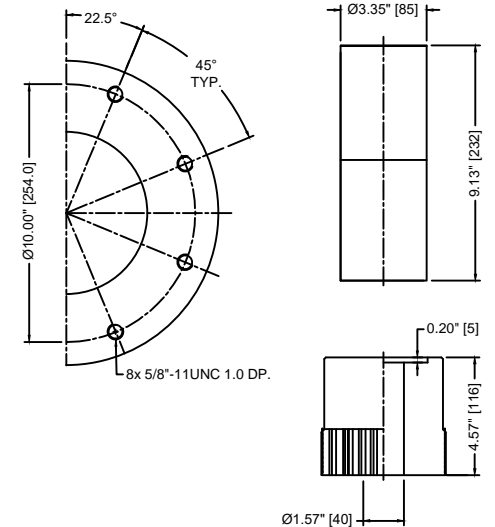
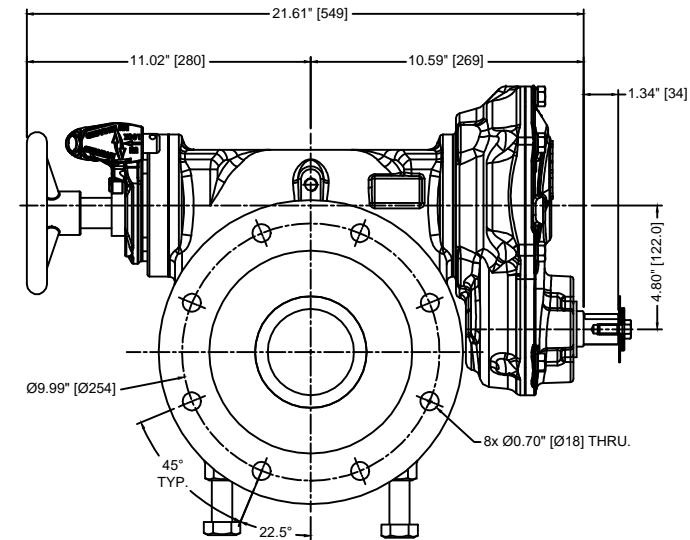
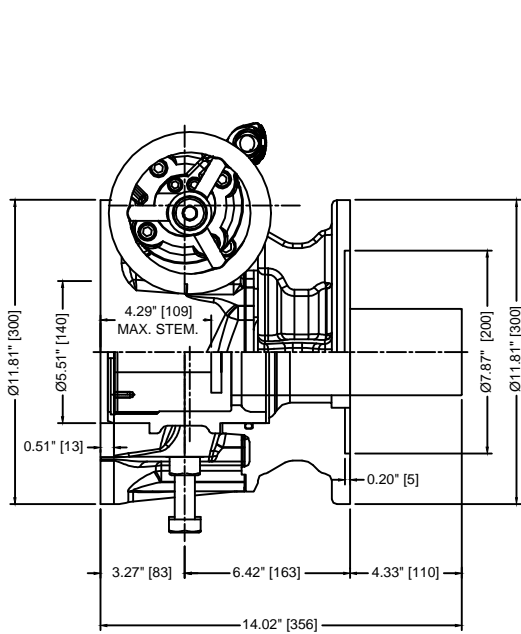


	1	2	3	4	5	6	7	8		
A	MAX. OUTPUT TORQUE [IN.LB]	MAX. INPUT TORQUE [IN.LB]	RATIO	MECHANICAL ADVANTAGE	TURNS PER 90°	WEIGHT [LBS]	MAX. ROUND BORE [IN.]	STANDARD VALVE MOUNTING STRADDLE C/L [IN.]	PREFERRED ACTUATOR MOUNTING STRADDLE C/L [IN.]	STANDARD HAND WHEEL DIAMETER [IN.]
	71,000	1,571	147:1	45.3	36.75	200	Ø3.74 W/ .98 X .55 KEY	FA25	FA25	25.00



UNITS: INCH [MM]



Advanced Industrial Technologies
 7721 Bluff Point Drive Phone: 281-855-3033
 Houston Texas U.S.A. 77086 Fax: 281-880-8061

DrwnBy	JM	Date	06/04/20	MODEL:	DWG71-147-F25-F25
ChkdBy	GB	Date	06/04/20	DRAWING NUMBER	DECLUTCHABLE GEAR
ApvdBy	JN	Date	06/04/20	DWG71-147-FA25-FA25-25NN-##	REV. 0
				DO NOT SCALE DRAWING	SHEET 1 OF 1 DWG. SIZE : A3

TM W4820CM