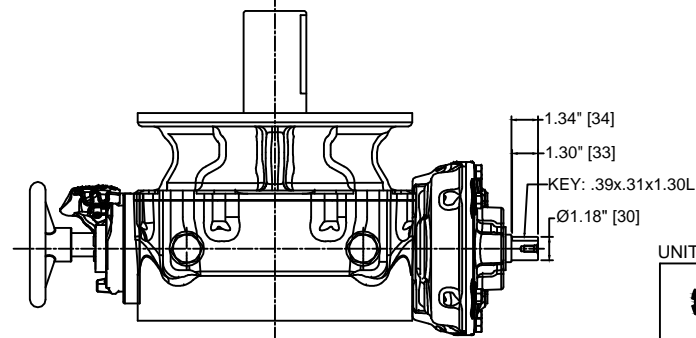
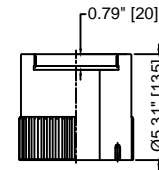
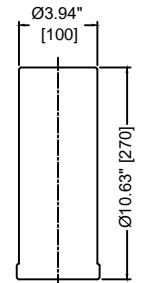
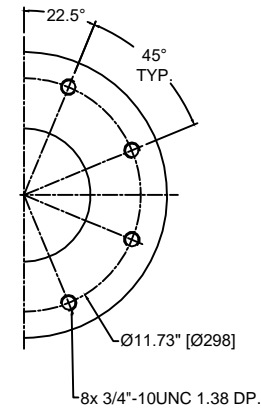
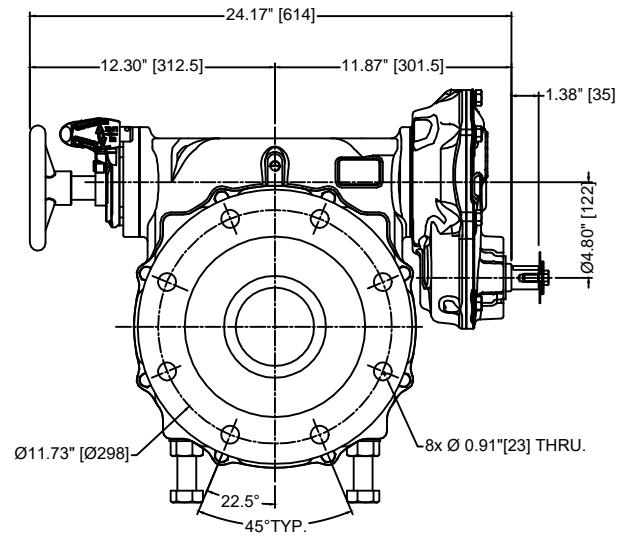
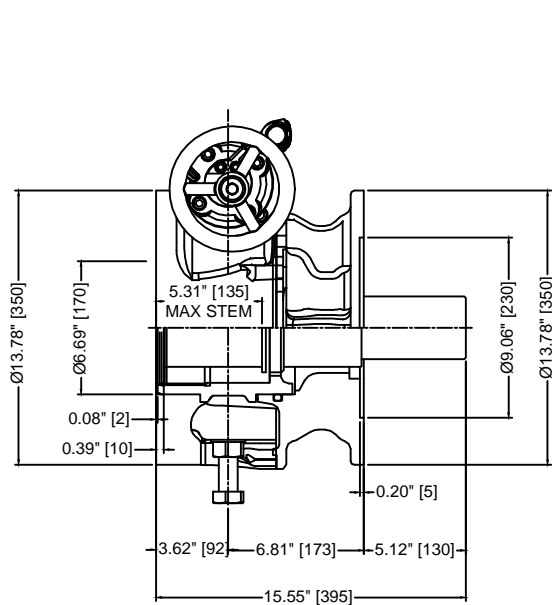


1	2	3	4	5	6	7	8		
MAX. OUTPUT TORQUE [IN.LB]	MAX. INPUT TORQUE [IN.LB]	RATIO	MECHANICAL ADVANTAGE	TURNS PER 90°	WEIGHT [LBS]	MAX. ROUND BORE [IN.]	STANDARD VALVE MOUNTING STRADDLE C/L [IN.]	PREFERRED ACTUATOR MOUNTING STRADDLE C/L [IN.]	STANDARD HAND WHEEL DIAMETER [IN.]
147,000	3,032	157.9:1	48.6	36.75	258	Ø4.50W/ 1.25 X .70 KEY	FA30	FA30	28.00



UNITS: INCH [MM]



Advanced Industrial Technologies
 7721 Bluff Point Drive Phone: 281-855-3033
 Houston Texas U.S.A. 77086 Fax: 281-880-8061

DrwnBy	JM	Date	06/04/20	MODEL: DWG147-157.9-F30-F30	
ChkdBy	GB	Date	06/04/20	DRAWING NUMBER	REV.
ApvdBy	JN	Date	06/04/20	DWG147-157.9-FA30-FA30-28NN-##	0
				DO NOT SCALE DRAWING	SHEET 1 OF 1 DWG. SIZE : A3

TM W582CM